



Valgisierende Tibiakopfosteotomie Patellahöhe und Patella- management bei der HTO

Stefan Hinterwimmer

www.sportsclinicgermany.com

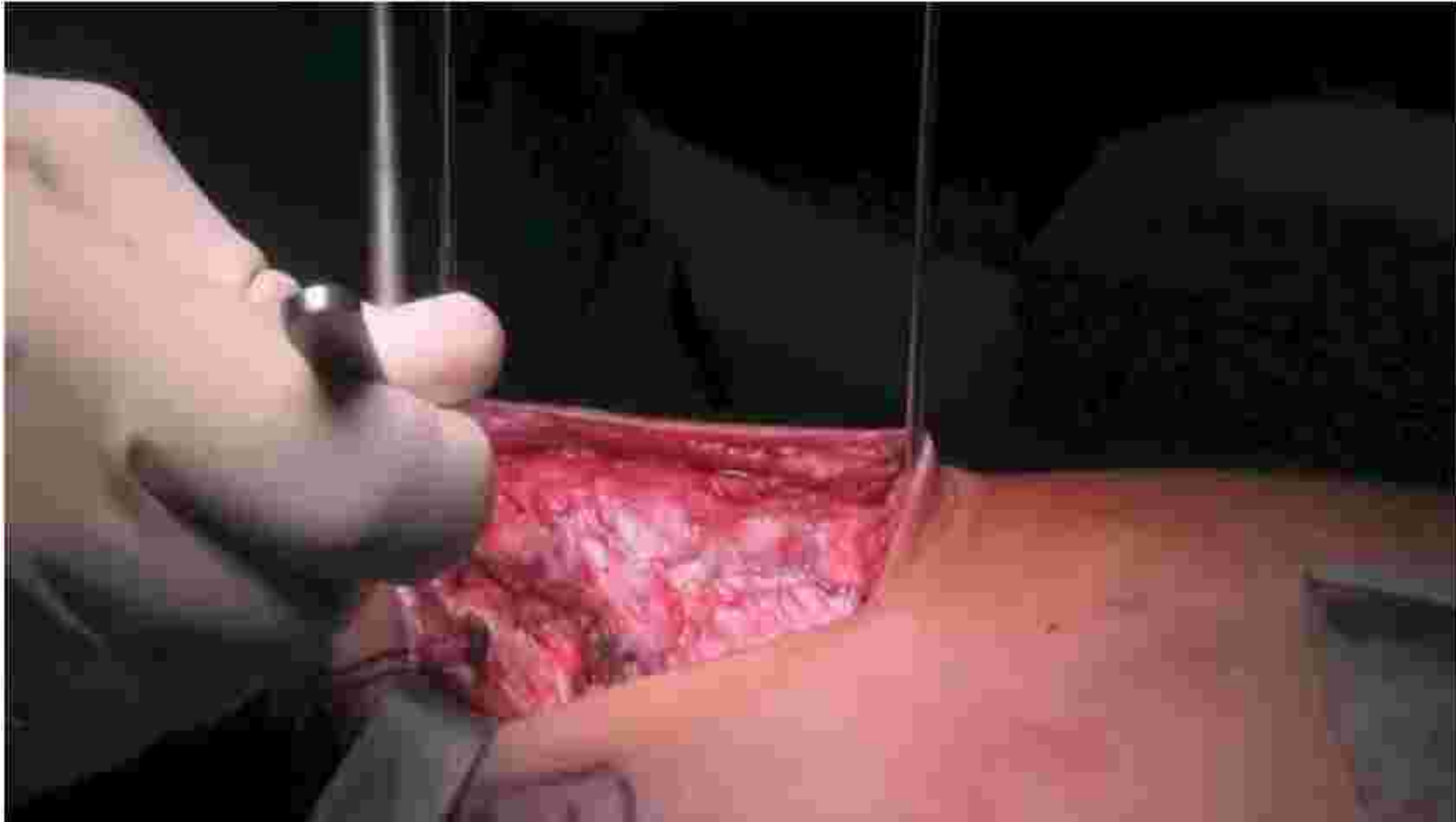


Valgisierende Tibiakopfosteotomie

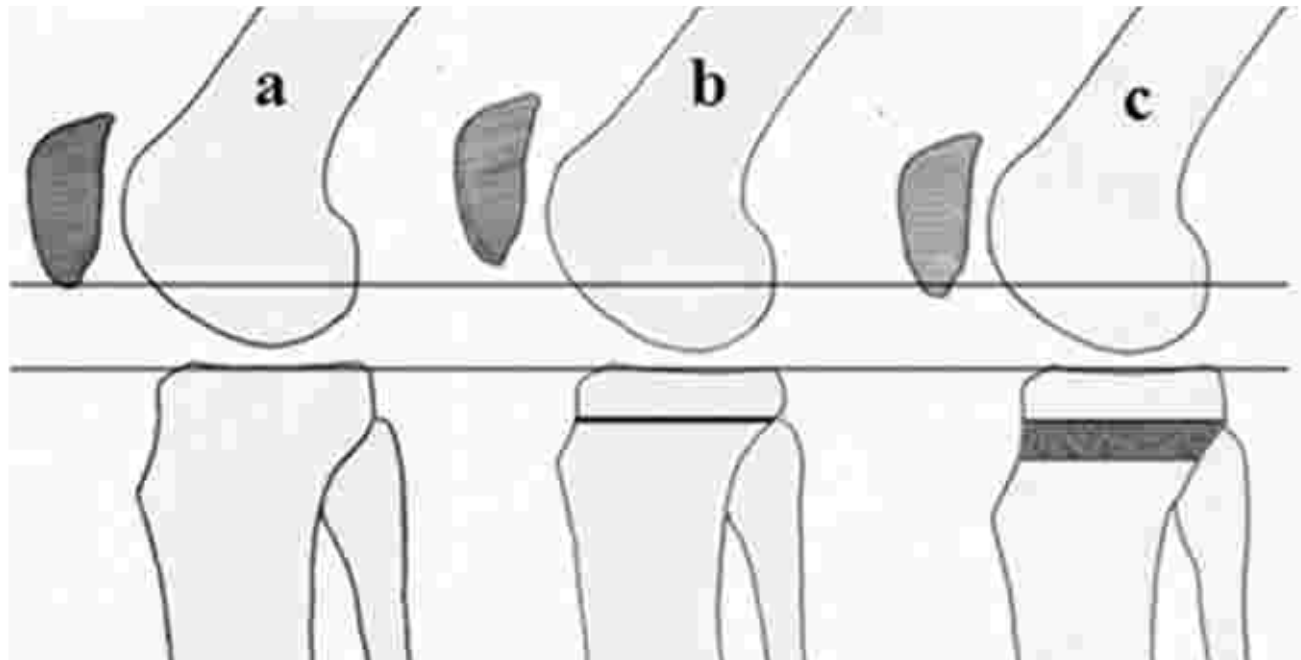
- Indikation und Outcome sind abhängig von der Patella
- Patellahöhe ändert sich in Abhängigkeit der Technik
- Patellamanagement



Open-wedge HTO



HTO - sagittal



H. El-Azab, P. Klabklay, A.B. Imhoff, J. Paul, S.Hinterwimmer , AJSM 2010



Indikation u. Outcome → Patella - abhängig

J Orthop Sci (2007) 13:170–187
DOI 10.1007/s00776-006-1225-7

JOURNAL OF
ORTHOPAEDIC SCIENCE
© The Japanese Orthopaedic Association

Original article

Impact of patellofemoral osteoarthritis on long-term outcome of high tibial osteotomy and effects of ventralization of tibial tubercle

Toshiyuki Mamei¹, Kazumasa Yabuta¹, Yoshitaka Aoki¹, and Akiro Mizuno²

High Tibial Osteotomy
A Prospective Clinical and Roentgenographic Review

JOHN F. RUDAN, B.Sc.(HON.), M.D., F.R.C.S.(C.),
AND MICHAEL A. SIMURDA, M.D., F.R.C.S.(C.)

From Queen's University, Kingston, Ontario, Canada.
Presented in part at the Canadian Orthopaedic Association Meeting, Edmonton, Alberta, Canada, June 5, 1986.
Reprint requests to John F. Rudan, M.D., Hotel Dieu Hospital, Kingston, Ontario K7L 3H6, Canada.
Received: October 18, 1988.

Fortgeschrittene
patello-femorale
Arthrose
verschlechtert
das Outcome

Patellahöhe



	CW		OW	
	A vs. B	B vs. C	A vs. B	B vs. C
ISI	2%	1%	- 4%	2%
CDI	8%	-1%	-12%	1%
BPI	3%	1%	-14%	0%

A = prä-OP B = post-OP C = ME

H. El-Azab, P. Klabklay, A.B. Imhoff, J. Paul, S.Hinterwimmer , AJSM 2010



Patellahöhe



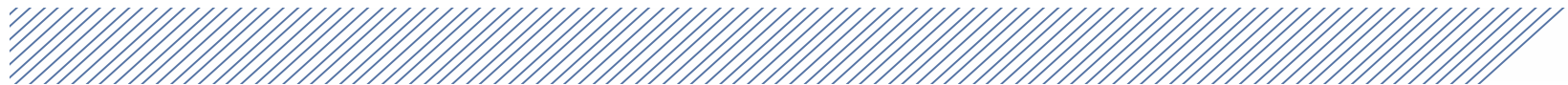
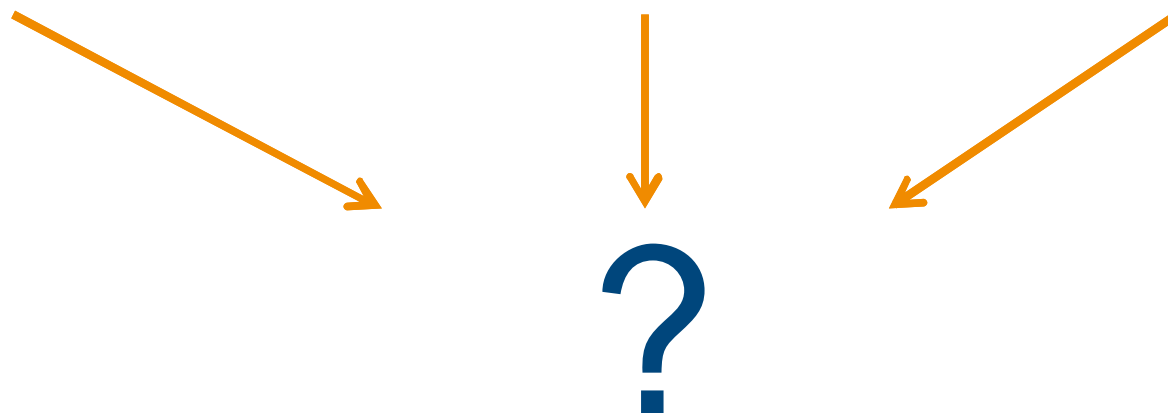
	CW		OW	
	A vs. B	B vs. C	A vs. B	B vs. C
ISI	2%	1%	- 4%	2%
CDI	8%	-1%	-12%	1%
BPI	3%	1%	-14%	0%

A = prä-OP B = post-OP C = ME

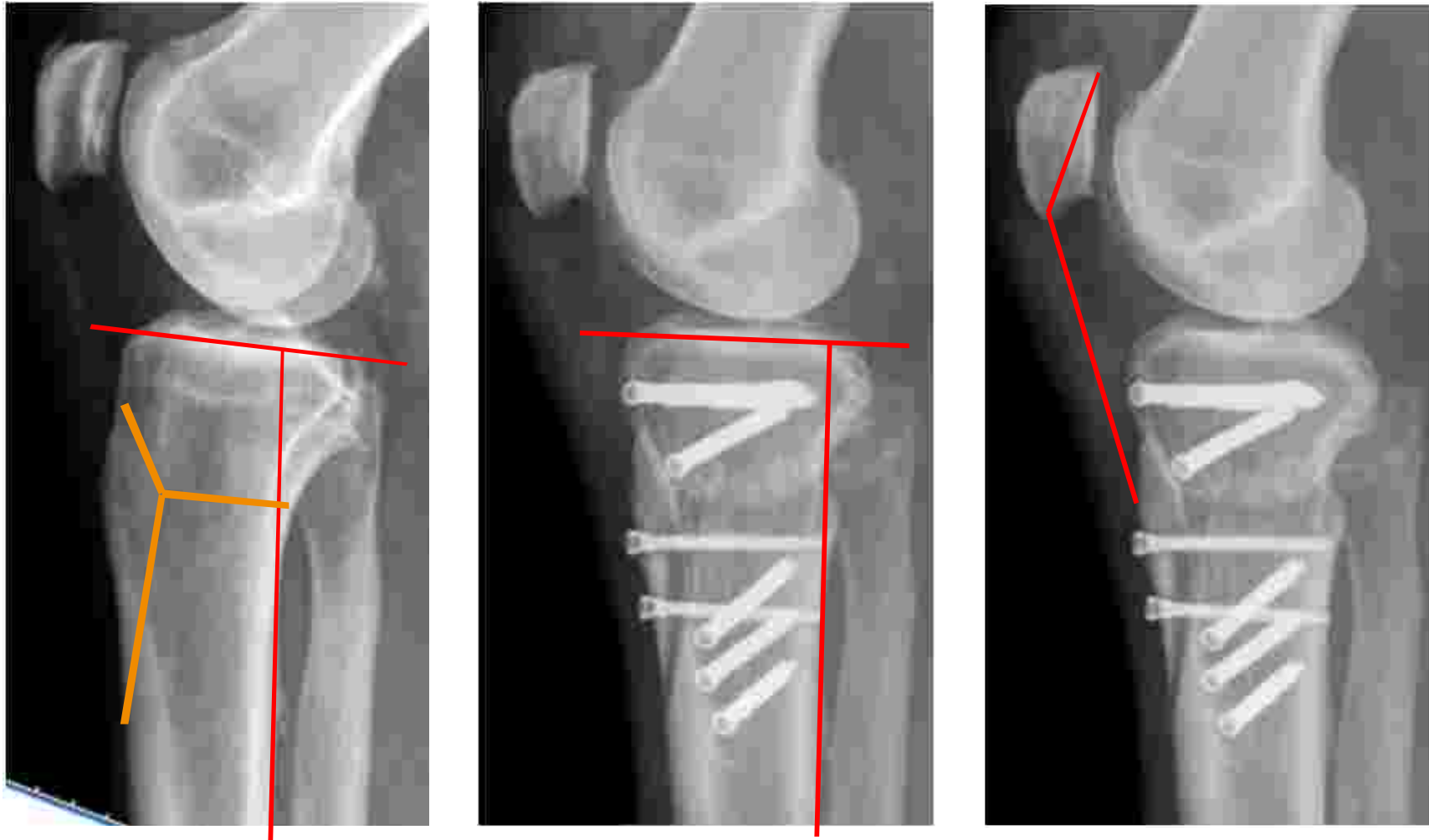
H. El-Azab, P. Klabklay, A.B. Imhoff, J. Paul, S.Hinterwimmer , AJSM 2010



Patellamanagement

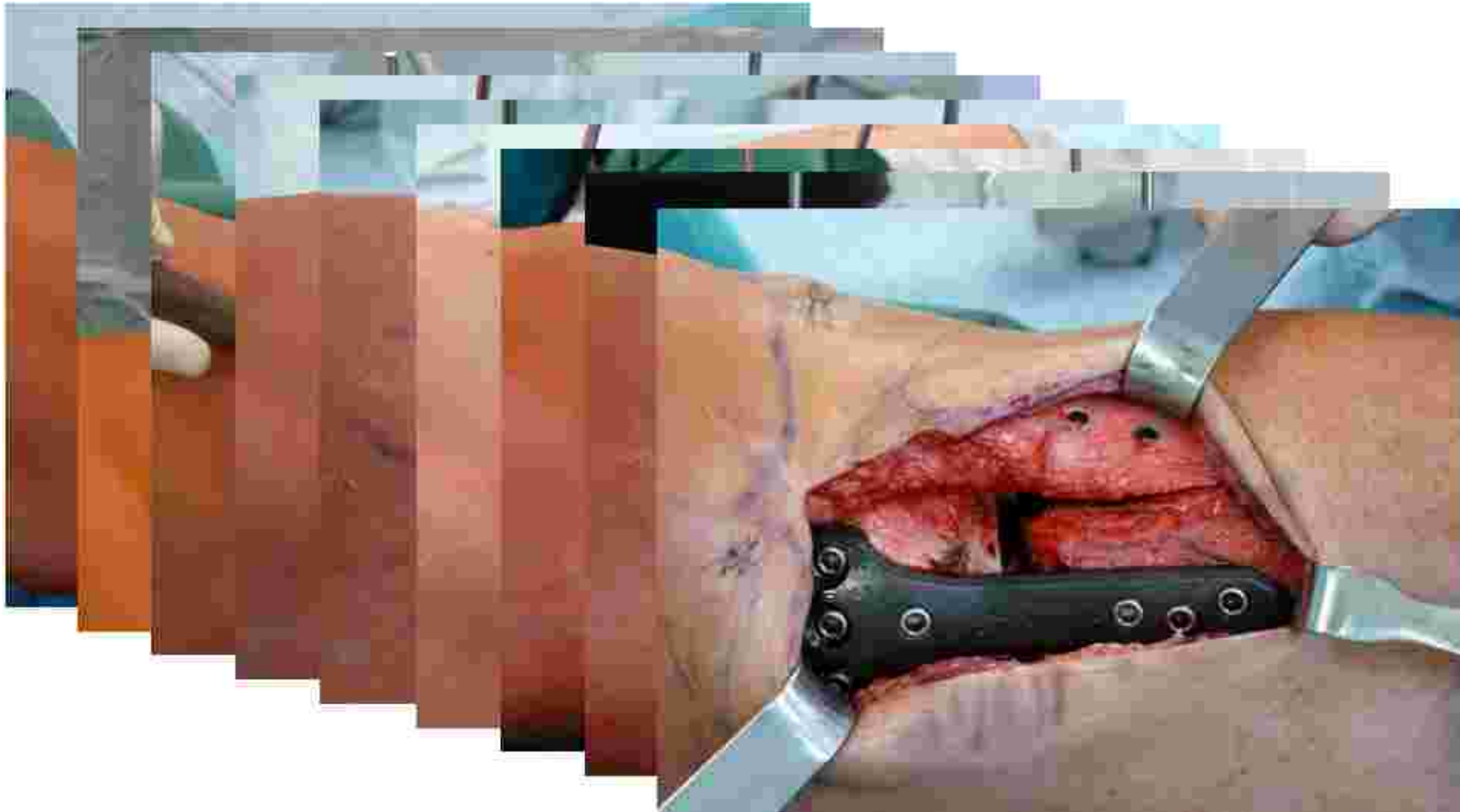


Patellamanagement



nach: Gaasbeck et al., Knee 2004

Technik HTO



Hinterwimmer et al., Arthroskopie 03/2012

Patellamanagement

Bone Joint J. 2013 Oct;95-B(10):1348-53. doi: 10.1302/0301-620X.95B10.30541.

Unicompartmental knee replacement after high tibial osteotomy: Invalidating a contraindication.

Valenzuela GA, Jacobson NA, Buzas D, Korecki TD, Valenzuela RG, Teitge RA.

Wayne State University, 10000 Telegraph Road, Taylor, Michigan 48124, USA.

Uni nach HTO vs. TEP nach HTO vs. primäre TEP

→ OKS + KSS = identisch

Am J Sports Med. 2013 Dec;41(12):2849-57. doi: 10.1177/0363546513505077. Epub 2013 Sep 27.

Combined tibial tubercle osteotomy with medial opening wedge high tibial osteotomy minimizes changes in patellar height: a prospective cohort study with historical controls.

Longino PD, Birmingham TB, Schultz WJ, Moyer RF, Giffin JR.

Trevor B. Birmingham, and J. Robert Giffin, FRCS(C Wolf Orthopaedic Biomechanics Laboratory, Fowler Kennedy Sport Medicine Clinic, University of Western Ontario, London, Ontario N6A 3K7, Canada. rgiffin@uwo.ca / tbirming@uwo.ca).

HTO und TTO → 10% Patella infera

HTO alleine → 40% Patella infera



Valgisierende Tibiakopfosteotomie

- Biplanare Osteotomie essentiell
- Patella bei der Indikation berücksichtigen
- Patellahöhe ändert sich in Abhängigkeit der Technik
- Berücksichtigung der distalen Patella-Osteotomie
- HTO-Outcome abhängig von der Patella
TEP-Outcome nicht von Patella abhängig





Vielen Dank

Stefan Hinterwimmer

www.sportsclinicgermany.com

